



# EROSION CONTROL FOR RESIDENTIAL BUILDING SITES

## Protecting Water Quality

Without proper erosion and sediment control protection, building sites can contribute large amounts of sediment and other pollutants to streams, rivers, and lakes.

## You and the Law

It is illegal to discharge muddy water and other pollutants to storm drainages or waterways.

## Common Pollutants at Building Sites

- Sediment leaving site
- Concrete wash from tools and trucks
- Sanitary waste & pathogens from porta-potties
- Debris from building materials - Litter
- Oil and grease from vehicles and equipment
- Paint, chemicals, and solvents

## What is Required

All land-disturbing activities, new subdivisions, and re-development projects disturbing greater than or equal to (1) acre and to projects of less than (1) acre that are part of a common plan of development or sale are required to comply with Stormwater Regulations.

## What You Can Do

Evaluate the site - Inventory and evaluate the resources on the lot before building. Identify areas where you want to limit construction traffic. Wherever possible, preserve existing vegetation to help control erosion and off-site sedimentation.

Select and install erosion/sediment control measures. Determine what is needed, and install them before clearing the site. Among the more commonly used practices are vegetative filter strips, silt fence, temporary construction gravel driveways, straw mulch, and storm sewer inlet protection devices.

Develop a maintenance program. Inspect erosion/sediment controls frequently and after each rainfall event. Correct deficiencies. Maintenance is also essential for them to function properly.

Revegetate the site. Do so as soon as possible.

## Responsibilities

The permit holder is responsible for the maintenance of erosion and sediment control measures protecting area inlets on their lots, as well as curb inlets along the street frontage. It is critical that sediment or other pollutants not be allowed to enter the storm drainage system.

During the entire construction process the permit holder is responsible to ensure that mud, dirt, rocks, and other debris are not allowed to erode onto the streets, sidewalks and ditches, nor tracked onto the streets by vehicles or equipment.

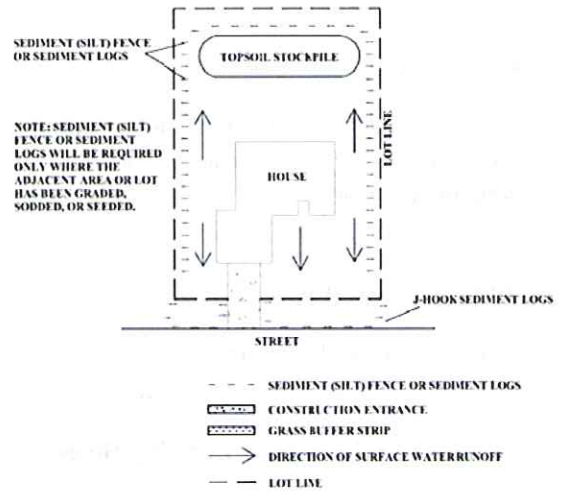
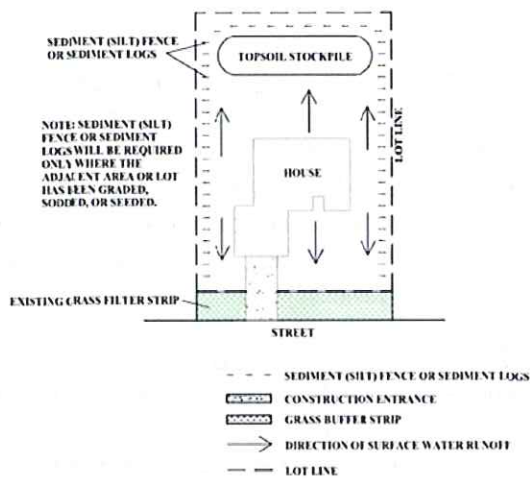
Violations can result in a civil infraction



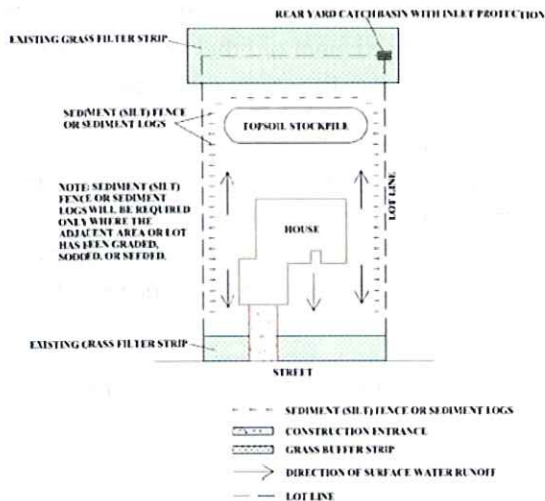
Resources

SINGLE FAMILY LOT EROSION CONTROL PLAN – TYPE C

SINGLE FAMILY LOT EROSION CONTROL PLAN – TYPE A



SINGLE FAMILY LOT EROSION CONTROL PLAN – TYPE B



*This brochure is not intended to address all circumstances or requirements*