

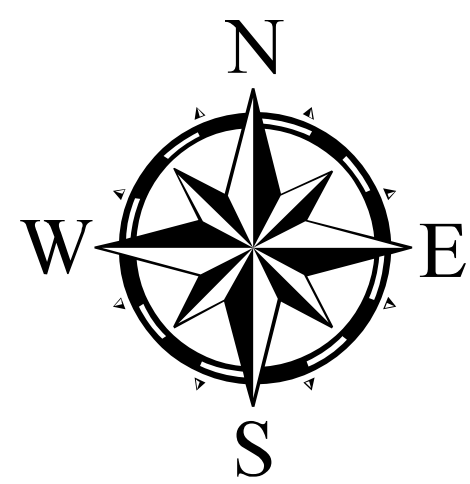
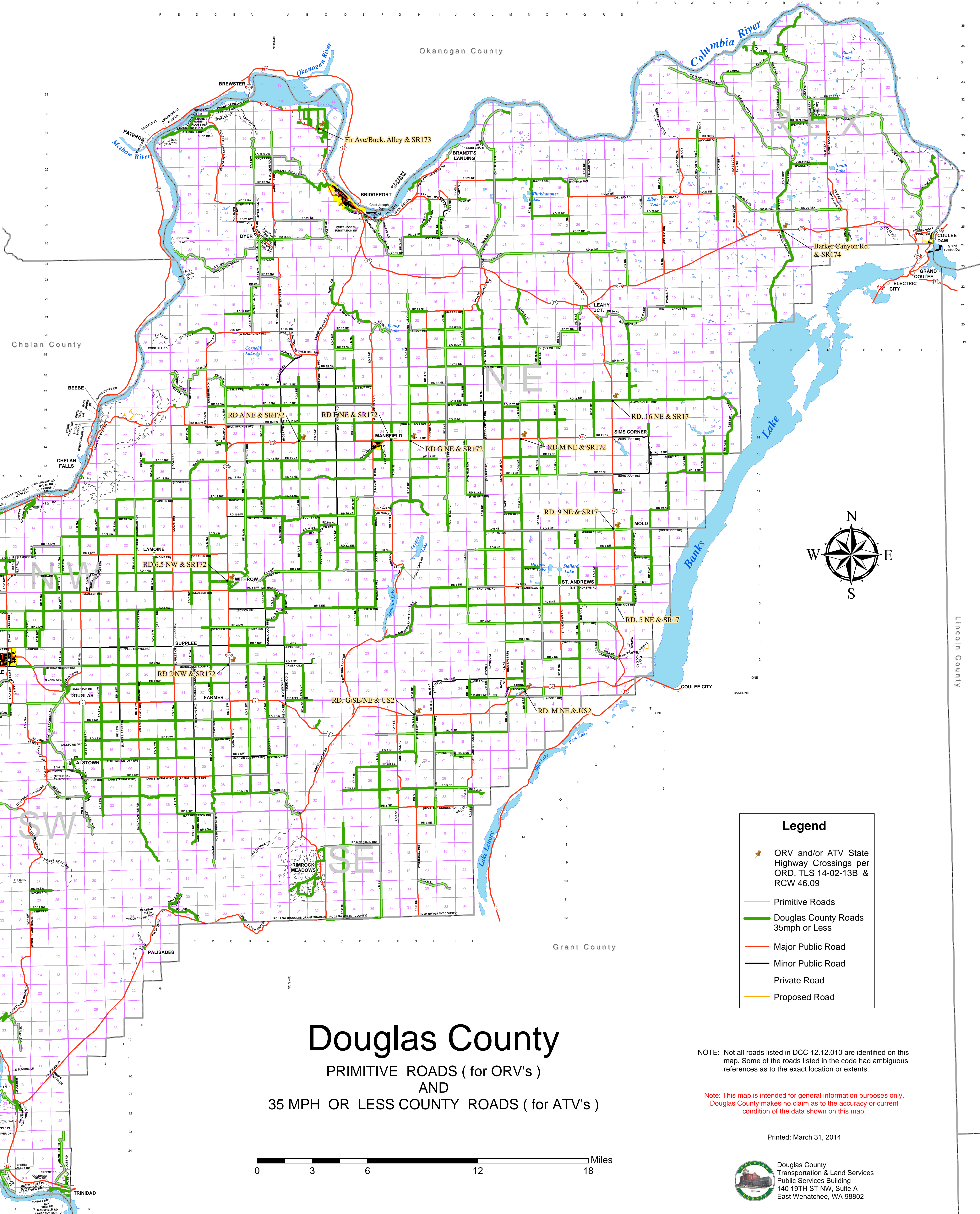
R 20 E R 21 E R 22 E R 23 E R 24 E R 25 E R 26 E R 27 E R 28 E R 29 E R 30 E R 31 E

Operation of off-road vehicles prohibited – Exceptions.
In accordance with RCW Chapter 46.09, off-road vehicles may be operated on any county road within Douglas County designated by the Board as a primitive road, except the following primitive roads:

ROAD NAME	ROAD LOG NUMBER	BEGIN MILE POST	END MILE POST
S. Douglas Ct. Rd. at intersection of US2	42910	3.50	3.60
E. Baseline Rd. at intersection of US2	48840	0.00	0.10
Rd. 4 NW at intersection of SR172	57400	0.00	0.10
Rd. 4 NW at intersection of SR172	61000	2.60	2.70
Rd. N NE at intersection of SR172	69070	0.90	1.10
Rd. O NE at intersection of SR172	69660	10.35	11.10
Kelara Grade	38880	0.00	0.70
Rd. P NW	29790	0.00	0.70
Rd. 1 NE (Bechtel Loop Rd.)	64650	1.70	5.80
Rd. A NW	96110	4.20	6.30
Rd. 3 NE	60780	3.20	4.20
Rd. 3 NW	52760	6.00	11.00
Sims Loop Rd.	69660	0.00	6.00
N. Division Rd.	71310	0.00	4.35
Rd. 1 NE	62890	0.80	1.50

Operation of wheeled all-terrain vehicles prohibited – Exceptions.
In accordance with RCW Chapter 46.09, wheeled all-terrain vehicles may be operated on any county road within Douglas County have a speed limit of 35 mph or less, except within the following county roads and segments of county roads:

ROAD NAME	ROAD LOG NUMBER	BEGIN MILE POST	END MILE POST
West Sunrise Ln. at intersection of SR28	40150	0.00	0.10
East Sunrise Ln. at intersection of SR28	40160	0.00	0.10
Riverside Pl. at intersection of SR28	31550	0.00	0.10
S. Union Ave. at intersection of SR28	30810	0.10	0.20
S. Quincy Ave. at intersection of SR28	30450	0.10	0.20
Akamai Way at intersection of SR28	30271	0.20	0.40
S. Perry Ave. at intersection of SR28	30270	0.00	0.10
Hadley St. NW at intersection of SR28	24360	0.00	0.10
Hadley St. NE at intersection of SR28	24400	0.00	0.10
31ST St. NW at intersection of SR28	25960	0.40	0.50
31ST St. NE at intersection of SR28	25960	0.30	0.40
38TH St. NW & NE at intersection of SR28	23540	0.20	0.30
NW Cascade Ave. at intersection of US2/97	23350	3.30	3.40
38TH St. NW at intersection of US2/97	27890	0.10	0.20
N. Lake Ave. at intersection of US2	52950	0.00	0.10
E. Baseline Rd. at intersection of US2	64860	0.00	0.10
Rd. 8 NE at intersection of SR17	67240	0.90	1.10
Rd. 7 NW at intersection of SR172	58320	0.00	0.10
Rd. 7 NW at intersection of SR172	61840	1.00	1.10
Rd. 11 NW at intersection of SR172	62140	0.00	0.10
Rd. 11 NW at intersection of SR172	63640	0.00	0.10
Rd. A NW at intersection of SR172	62850	4.00	4.10
Rd. N NE at intersection of SR172	69070	0.90	1.10
Rd. O NE at intersection of SR172	79370	0.00	0.10



Legend

- ORV and/or ATV State Highway Crossings per ORD. TLS 14-02-13B & RCW 46.09
- Primitive Roads
- Douglas County Roads 35mph or Less
- Major Public Road
- Minor Public Road
- Private Road
- Proposed Road

Douglas County

PRIMITIVE ROADS (for ORV's)
AND
35 MPH OR LESS COUNTY ROADS (for ATV's)

NOTE: Not all roads listed in DCC 12.12.010 are identified on this map. Some of the roads listed in the code had ambiguous references as to the exact location or extents.

Note: This map is intended for general information purposes only. Douglas County makes no claim as to the accuracy or current condition of the data shown on this map.

Printed: March 31, 2014



Douglas County
Transportation & Land Services
Public Services Building
140 19TH ST NW, Suite A
East Wenatchee, WA 98802

R 20 E R 21 E R 22 E R 23 E R 24 E R 25 E R 26 E R 27 E R 28 E R 29 E R 30 E R 31 E

T 20 N T 21 N T 22 N T 23 N T 24 N T 25 N T 26 N T 27 N T 28 N T 29 N T 30 N T 31 N

T 20 N T 21 N T 22 N T 23 N T 24 N T 25 N T 26 N T 27 N T 28 N T 29 N T 30 N T 31 N