

CLASS C WEEDS

Common Name	Scientific Name
Absinth wormwood	<i>Artemisia absinthium</i>
Babysbreath	<i>Gypsophila paniculata</i>
Black henbane	<i>Hyocyamus niger</i>
Cereal rye	<i>Secale cereale</i>
Common groundsel	<i>Senecio vulgaris</i>

Common St. Johnswort *Hypericum perforatum*

Common tansy	<i>Tanacetum vulgare</i>
Curly-leaf pondweed	<i>Potamogeton crispus</i>

Field bindweed *Convolvulus arvensis*

Hairy whitetop	<i>Cardaria pubescens</i>
Hairy willow-herb	<i>Epilobium hirsutum</i>
Hawkweed, common	<i>Hieracium lachenalii</i>

Hoary cress *Cardaria draba*

Jointed goatgrass *Aegilops cylindrica*

Old man's beard	<i>Clematis vitalba</i>
Reed canarygrass	<i>Phalaris arundinacea</i>
Scentless mayweed	<i>Matricaria perforata</i>
Smoothseed alfalfa dodder	<i>Cuscuta approximata</i>
Spikeweed	<i>Hemizonia pungens</i>
Spiny cocklebur	<i>Xanthium spinosum</i>
Thistle, bull	<i>Cirsium vulgare</i>

Thistle, Canada *Cirsium arvense*

White cockle	<i>Silene latifolia ssp. alba</i>
Yellow archangel	<i>Lamiastrum galeobdolon</i>

Yellow flag iris *Iris pseudacorus*

Yellow toadflax	<i>Linaria vulgaris</i>
-----------------	-------------------------

AQUATIC WEEDS

CLASS A WEEDS

Floating primrose-willow	<i>Ludwigia peploides</i>
Hydrilla	<i>Hydrilla verticillata</i>

CLASS B WEEDS

Brazilian elodea	<i>Egeria densa</i>
Eurasian watermilfoil	<i>Myriophyllum spicatum</i>
Fanwort	<i>Cabomba caroliniana</i>
Fragrant water lily	<i>Nymphaea odorata</i>
Parrotfeather milfoil	<i>Myriophyllum aquaticum</i>
Water primrose	<i>Ludwigia peploides</i>
Yellow floating heart	<i>Nymphoides peltata</i>

DOUGLAS COUNTY WEED IDENTIFICATION



Buffalobur **Dalmatian toadflax** **Houndstongue**



Diffuse knapweed **Spotted knapweed** **Purple loosestrife**



Puncturevine **Rush skeletonweed** **Leafy spurge**



Musk thistle **Plumeless thistle** **Scotch thistle**



St. Johnswort **Field bindweed** **Hoary cress**



Jointed goatgrass **Canada thistle** **Yellow flag iris**

Picture credit: Washington State Weed Control Board, King County Noxious Weed Board, Spokane County Noxious Weed Board and Idaho Weed Awareness Campaign.

The Douglas County Commissioners activated the Douglas County Weed Management Task Force in October 2004. Nine individuals, who geographically represent Douglas County agriculture and urban areas serve as volunteer members. Ex-Officio members on the Task Force include representatives from the Douglas County Commissioners, Douglas County Transportation and Land Services, Foster Creek Conservation District and WSU - Douglas County Extension.

The purpose of this Task Force is to:

- Increase public awareness of noxious weeds in Douglas County
- Promote an integrated weed management program to control weeds
- Educate private landowners about weed control methods
- Encourage a cooperative weed management program between city, county, state and federal entities

The task force meets quarterly and the meetings are open to the public.

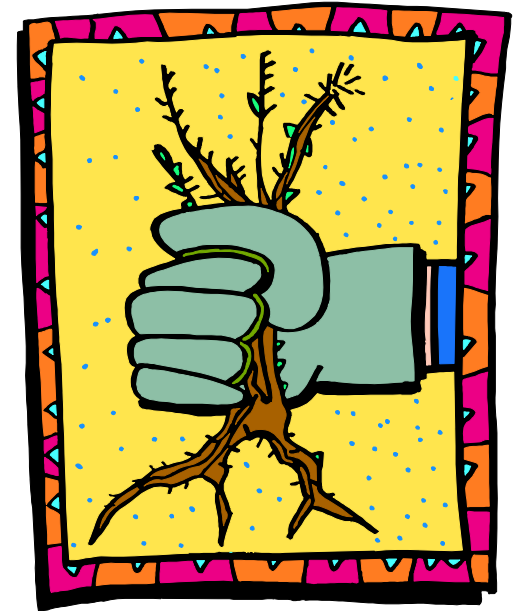


Douglas County
Weed Management Task Force
Cooperating Agencies:

Douglas County Commissioners
Phone: 509.745.8537 www.douglascountywa.net
Douglas County Transportation and Land Services
Phone: 509.884.7173 www.douglascountywa.net
Foster Creek Conservation District
Phone: 509.745.8362 www.fostercreek.net
WSU - Douglas County Extension
Phone: 509.745.8531 www.ncw.wsu.edu

2008

DOUGLAS COUNTY NOXIOUS WEED LIST



DOUGLAS COUNTY WEED MANAGEMENT TASK FORCE

This Noxious Weed List has been adopted from the Washington State Noxious Weed list contained in chapter 16-750 WAC.

WEED CLASSIFICATIONS

Class A Noxious Weeds: are defined as non-native species limited in distribution in Washington State. State law requires that these weeds be eradicated.

Class A Weeds Known to occur in Douglas County

Class B Noxious Weeds: are defined as non-native species either absent from or limited in distribution in some portions of the state, but very abundant in other areas. The goal is to contain the plants where they are already widespread and prevent their spread into new areas.

Class B Designate Weeds known to occur in Douglas County.

Control is defined as the prevention of all new seed production within a single program year with the eventual goal being a reduction in the total acreage of the plant to a point where eradication is deemed possible.

Class B Reduction Weeds known to occur in Douglas County.

Weeds listed in this category are known to be present within the county but are too widespread to be immediately controlled or eradicated countywide.

Class C Noxious Weeds: are defined as non-native plants already widespread in Washington State. Counties can choose to enforce control or educate residents about controlling these noxious weeds or they can do both.

Class C Weeds known to occur in Douglas County.

Weeds listed in this category are so widely disseminated that prevention of seed production within a single season is not practical. Nonetheless the species listed in this category are considered noxious weeds and landowners are encouraged to control them.

CLASS A WEEDS

Common Name	Scientific Name
Buffalobur	<i>Solanum rostratum</i>
Common crupina	<i>Crupina vulgaris</i>
Cordgrass, dense flower	<i>Spartina densiflora</i>
Cordgrass, salt meadow	<i>Spartina patens</i>
Cordgrass, common	<i>Sartina anglica</i>
Dyers woad	<i>Isatis tinctoria</i>
Eggleaf spurge	<i>Euphorbia oblongata</i>
Garlic mustard	<i>Alliaria petiolata</i>
Giant hogweed	<i>Heracleum mantegazzianum</i>
Goatsrue	<i>Galega officinalis</i>
Hawkweed, European	<i>Hieracium sabaudum</i>
Hawkweed, yellow devil	<i>Hieracium floribundum</i>
Johnsongrass	<i>Sorghum halepense</i>
Knapweed, bighead	<i>Centaurea macrocephala</i>
Knapweed, Vochin	<i>Centaurea nigrescens</i>
Kudzu	<i>Pueraria montana var. lobata</i>
Meadow clary	<i>Salvia pratensis</i>
Purple starthistle	<i>Centaurea calcitrapa</i>
Reed sweetgrass	<i>Glyceria maxima</i>
Ricefield bulrush	<i>Schoenoplectus mucronatus</i>
Sage, clary	<i>Salvia sclarea</i>
Sage, Mediterranean	<i>Salvia aethiopsis</i>
Silverleaf nightshade	<i>Solanum elaeagnifolium</i>
Spanish broom	<i>Spartium junceum</i>
Spurge flax	<i>Thymelaea passerina</i>
Syrian bean-caper	<i>Zygophyllum fabago</i>
Texas blueweed	<i>Helianthus ciliaris</i>
Thistle, Italian	<i>Carduus pycnocephalus</i>
Thistle, milk	<i>Silybum marianum</i>
Thistle, slenderflower	<i>Carduus tenuiflorus</i>
Variable-leaf milfoil	<i>Myriophyllum heterophyllum</i>
Velvetleaf	<i>Abutilon theophrasti</i>
Wild four o'clock	<i>Mirabilis nyctaginea</i>

CLASS B WEEDS

Common Name	Scientific Name
Australian fieldcress	<i>Rorippa austriaca</i>
Blackgrass	<i>Alopecurus myosuroides</i>
Blueweed	<i>Echium vulgare</i>
Bugloss, annual	<i>Anchusa arvensis</i>
Bugloss, common	<i>Anchusa officinalis</i>
Camelthorn	<i>Alhagi maurorum</i>
Common catsear	<i>Hypochaeris radicata</i>
Cordgrass, smooth	<i>Spartina alterniflora</i>
Dalmatian toadflax	<i>Linaria dalmatica ssp. dalmatica</i>
Gorse	<i>Ulex europaeus</i>
Grass-leaved arrowhead	<i>Sagittaria graminea</i>
Hawkweed, oxtongue	<i>Picris hieracioides</i>
Hawkweed, mouseear	<i>Hieracium pilosella</i>
Hawkweed, orange	<i>Hieracium aurantiacum</i>
Hawkweed, polar	<i>Hieracium atratum</i>
Hawkweed, queen-devil	<i>Hieracium glomeratum</i>
Hawkweed, smooth	<i>Hieracium laevigatum</i>
Hawkweed, yellow	<i>Hieracium caespitosum</i>
Herb-Robert	<i>Geranium robertianum</i>
Hoary alyssum	<i>Berteroa incana</i>
Houndstongue	<i>Cynoglossum officinale</i>
Indigobush	<i>Amorpha fruticosa</i>
Knapweed, black	<i>Centaurea nigra</i>
Knapweed, brown	<i>Centaurea jacea</i>
Knapweed, diffuse	<i>Centaurea diffusa</i>
Knapweed, meadow	<i>Centaurea jacea x nigra</i>
Knapweed, spotted	<i>Centaurea stoebe</i>
Knotweed, Bohemian	<i>Polygonum bohemicum</i>
Knotweed, Japanese	<i>Polygonum cuspidatum</i>
Leprodiclis	<i>Leprodiclis holosteoides</i>
Longspin sandbur	<i>Cenchrus longispinus</i>
Loosestrife, garden	<i>Lysimachina vulgaris</i>

CLASS B WEEDS

Common Name	Scientific Name
Loosestrife, purple	<i>Lythrum salicaria</i>
Loosestrife, wand	<i>Lythrum vigatum</i>
Oxeye daisy	<i>Leucanthemum vulgare</i>
Perennial pepperweed	<i>Lepidium latifolium</i>
Perennial sowthistle	<i>Sonchus arvensis ssp. arvensis</i>
Policeman's helmet	<i>Impatiens glandulifera</i>
Poison hemlock	<i>Conium maculatum</i>
Puncturevine	<i>Tribulus terrestris</i>
Rush skeletonweed	<i>Chondrilla juncea</i>
Saltcedar	<i>Tamarix ramosissima</i>
Scotch broom	<i>Cytisus scoparius</i>
Spurge, leafy	<i>Euphorbia esula</i>
Sulfur cinguefoil	<i>Potentilla recta</i>
Swainsonpea	<i>Sphaerophysa salsula</i>
Tansy ragwort	<i>Senecio jacobaea</i>
Thistle, musk	<i>Carduus nutans</i>
Thistle, plumeless	<i>Carduus acanthoides</i>
Thistle, Scotch	<i>Onopordum acanthium</i>
White bryony	<i>Bryonia alba</i>
Wild carrot	<i>Daucus carota</i>
Wild chervil	<i>Anthriscus sylvestris</i>
Yellow nutsedge	<i>Cyperus esculentus</i>
Yellow starthistle	<i>Centaurea solstitialis</i>



Purple loosestrife

Class C and Aquatic Weeds on reverse side.