

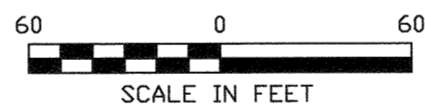
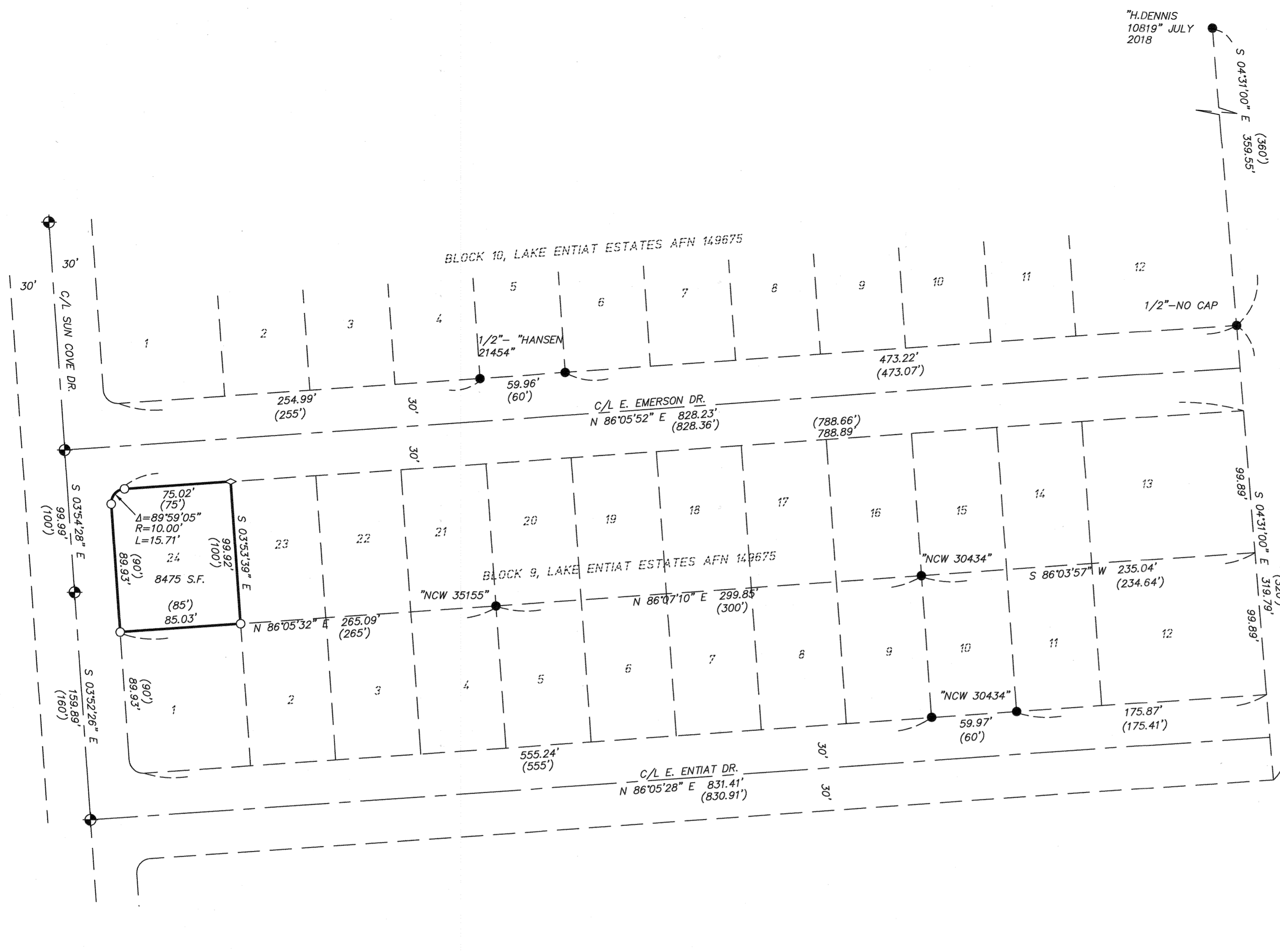
RECORD OF SURVEY FOR TIM BENNETT

LEGAL DESCRIPTION

(REF. AFN 3216663)
LOT 24, BLOCK 9, LAKE ENTIAT ESTATES ACCORDING TO THE PLAT THEREOF RECORDED IN VOLUME C OF PLATS, PAGES 45 THROUGH 49, UNDER AUDITORS FILE NUMBER 149675.

EQUIPMENT & PROCEDURES

EQUIPMENT: JAVAD TRIUMPH-LS & TRIUMPH 2 GPS
WILD TC1000 TOTAL STATION
PROCEDURES: INITIAL CONTROL ESTABLISHED BY REAL TIME KINEMATIC GPS OBSERVATIONS, WITH A PRECISION OF ±2 CM. CONVENTIONAL TRAVERSES RUN AS NECESSARY BETWEEN INITIAL CONTROL FOR SITE SPECIFIC INFORMATION. PROCEDURES MEET OR EXCEED W.A.C. 332-130-090.



BASIS OF BEARING

WASHINGTON STATE COORDINATE SYSTEM, NORTH ZONE, NAD 83/91 DERIVED FROM G.P.S. OBSERVATIONS.

STATEMENT OF GRID DISTANCES

THE DISTANCES AND AREAS SHOWN HEREON, OTHER THAN RECORD, ARE GRID VALUES PER NAD 83/91, WASHINGTON STATE COORDINATE SYSTEM, NORTH ZONE, WITH A COMBINED GROUND TO GRID SCALE FACTOR OF 0.99991856539475.

LEGEND

- ⊕ FOUND 3-1/2" ALUMINUM CAP "ERLANDSEN & ASSOC. LS 30434" IN MONUMENT CASE AUGUST 2019
- FOUND 5/8" REBAR OR AS SHOWN AUGUST 2019
- SET 5/8" X 24" REBAR & CAP "DAWSON 35155" AUGUST 2019
- ◇ SET R.R. SPIKE AUGUST 2019
- () RECORD DATA
- AFN AUDITORS FILE NUMBER
- ROS RECORD OF SURVEY
- PL PROPERTY LINE

172.50

AUDITOR'S CERTIFICATE A.F.# 3223464

FILED FOR RECORD THIS 6 DAY OF September, 2019
AT 10:50 AM, IN BOOK NA OF SURVEYS AT PAGE NA AT THE
REQUEST OF BRUCE DAWSON

March Spada DEPUTY
Thad L. Duval COUNTY AUDITOR

SURVEYOR'S CERTIFICATE

THIS MAP CORRECTLY REPRESENTS A SURVEY MADE BY ME OR UNDER MY DIRECTION IN CONFORMANCE WITH THE REQUIREMENTS OF THE SURVEY RECORDING ACT AT THE REQUEST OF

TIM BENNETT, IN AUGUST, 2019



INDEXING

A PORTION OF
THE SE.1/4 OF THE SE.1/4,
SEC. 11, T. 26 N. R. 21 E.W.M.

DOUGLAS COUNTY, WASHINGTON

DAWSON SURVEYING & GEOMATICS, LLC

P.O. Box 656
Waterville, WA 98858
509-433-4358
dawson.survey@nwi.net

DATE:	08-31-19	DWG NAME:	1932.DWG
DRAWN BY:	BWD	JOB NO.:	1932
SCALE:	1"=60'	SHEET 1 OF 1	