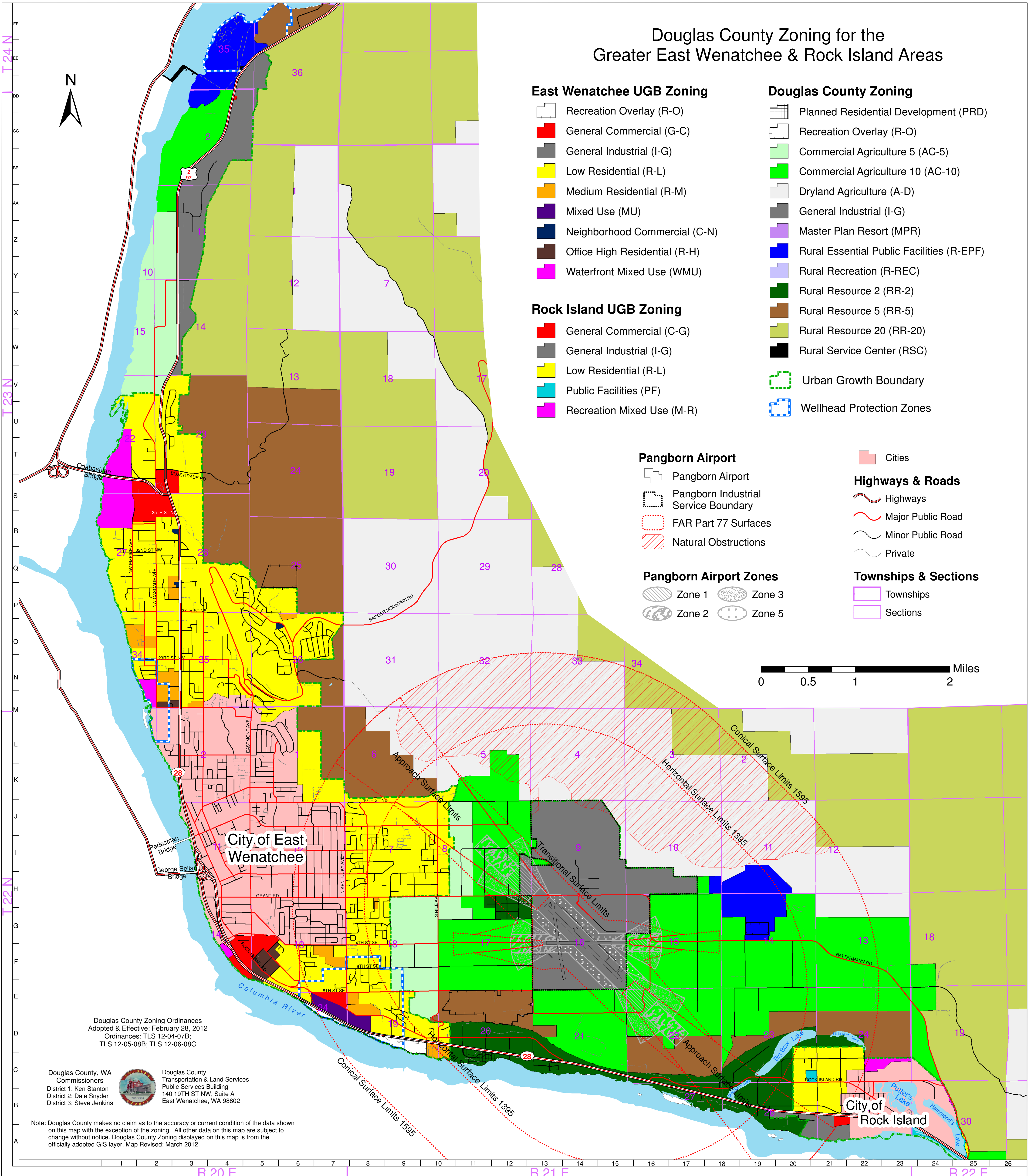


Douglas County Zoning for the Greater East Wenatchee & Rock Island Areas



East Wenatchee UGB Zoning

- Recreation Overlay (R-O)
- General Commercial (G-C)
- General Industrial (I-G)
- Low Residential (R-L)
- Medium Residential (R-M)
- Mixed Use (MU)
- Neighborhood Commercial (C-N)
- Office High Residential (R-H)
- Waterfront Mixed Use (WMU)

Rock Island UGB Zoning

- General Commercial (C-G)
- General Industrial (I-G)
- Low Residential (R-L)
- Public Facilities (PF)
- Recreation Mixed Use (M-R)

Douglas County Zoning

- Planned Residential Development (PRD)
- Recreation Overlay (R-O)
- Commercial Agriculture 5 (AC-5)
- Commercial Agriculture 10 (AC-10)
- Dryland Agriculture (A-D)
- General Industrial (I-G)
- Master Plan Resort (MPR)
- Rural Essential Public Facilities (R-EPF)
- Rural Recreation (R-REC)
- Rural Resource 2 (RR-2)
- Rural Resource 5 (RR-5)
- Rural Resource 20 (RR-20)
- Rural Service Center (RSC)
- Urban Growth Boundary
- Wellhead Protection Zones

Pangborn Airport

- Pangborn Airport
- Pangborn Industrial Service Boundary
- FAR Part 77 Surfaces
- Natural Obstructions

Pangborn Airport Zones

- Zone 1
- Zone 2
- Zone 3
- Zone 5

Cities

- ### Highways & Roads
- Highways
 - Major Public Road
 - Minor Public Road
 - Private

Townships & Sections

- Townships
- Sections



Douglas County Zoning Ordinances
 Adopted & Effective: February 28, 2012
 Ordinances: TLS 12-04-07B;
 TLS 12-05-08B; TLS 12-06-08C

Douglas County, WA
 Commissioners
 District 1: Ken Stanton
 District 2: Dale Snyder
 District 3: Steve Jenkins

Douglas County
 Transportation & Land Services
 Public Services Building
 140 19TH ST NW, Suite A
 East Wenatchee, WA 98802

Note: Douglas County makes no claim as to the accuracy or current condition of the data shown on this map with the exception of the zoning. All other data on this map are subject to change without notice. Douglas County Zoning displayed on this map is from the officially adopted GIS layer. Map Revised: March 2012